

BELLE FOURCHE ECONOMIC DEVELOPMENT



Black Hills Roundup Ag Banquet

September 23, 2021

Time: 5:00 p.m. Social

Location:
Belle Fourche Community Hall

BFDC Board of Directors Meeting

October 13, 2021

Time: 7:00 a.m.

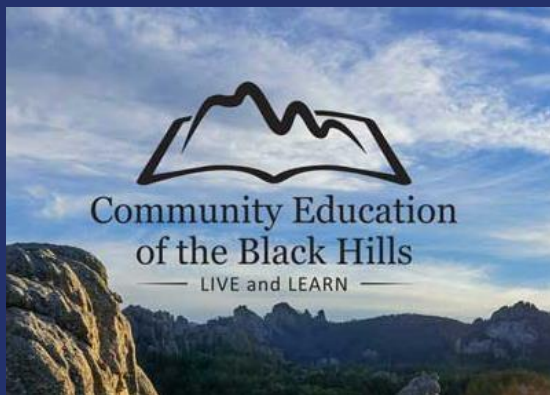
Location: BFDC Conference Room
- 5th & Grant Plaza, 608 5th Ave.

RESOURCE

NeighborWorks
Dakota Home Resources

NeighborWorksSDHR.org

Assists in providing safe, decent, and affordable housing and revitalizing neighborhoods to improve the quality of life in our communities.



Live and Learn

The Fall 2021 Season of Community Education is here!

Registration Begins September 1st.

www.CommunityEducationClasses.org



The [Rushmore Region Economic Development Alliance](#) is an economic development initiative of Black Hills Community Economic Development. It was created to stimulate and increase business investment in the Black Hills of western South Dakota. The Alliance provides consulting, marketing, and other services to support the growth and success of new and existing businesses, as well as businesses relocating to the region. The Alliance works closely with local economic development organizations and development partners to build capacity within the region.

We hope you enjoy and share this video of the amazing resources available in our 6-county region. Belle Fourche is in two different spots in the video. Watch Video [HERE](#)



Beautiful Belle Fourche



HUNTER ANDERSON PHOTOGRAPHY - Based in the Black Hills of South Dakota, Hunter specializes in candid, event, rural & real estate photography as well as 360 virtual tours. Follow us each newsletter as we feature his “Beautiful Belle Fourche” photos. HunterAndersonPhotography.com

NEW CONSTRUCTION – Ready for Lease!

- 767 +/- sq. ft. of retail or office space
- 3 – 11x15 offices
- Build to suit space in the west end of the building

Located in a downtown business plaza, excellent parking, and Highway 85 signage. Shared common space lobby and restrooms. Shared scheduled space of oversized conference room with technology in place. FREE Wi-Fi throughout the facility.

For more information: 605-892-5065





September 22, 2021 | Freight, Intermodal, News, Short Lines & Regionals, Switching & Terminal

Belle Fourche, S.D., Transload Tripling Capacity

Written by **Marybeth Luczak**, Executive Editor



A groundbreaking ceremony was held recently for the Belle Fourche, S.D., transloading facility's \$2.4 million expansion project.



The Belle Fourche, S.D., transloading facility is undergoing a \$2.4 million expansion to accommodate up to 90 railcars; completion is slated for mid-July 2022.

The move will triple rail capacity at the facility, which currently accommodates up to 27 cars and is served by the 750-mile **Rapid City Pierre & Eastern (RCP&E), a Genesee & Wyoming subsidiary**. The expansion project also includes construction of two additional tracks with four turnouts. It will be covered by a **Federal Railroad Administration** grant of up to \$1,917,710, according to the **South Dakota Governor's Office of Economic Development**; the **Belle Fourche Development Corporation** (BFDC) has secured the remaining 20% or \$480,000 (\$240,000 of which has been funded by a South Dakota Local Infrastructure Improvement Project grant through the Governor's Office of Economic Development; the rest was split between the city of Belle Fourche and Butte County).



G&W Assistant Vice President of Industrial Development Zach Boehme

"The ability to have more capacity and handle unit-train type volumes makes this an extremely strategic location for us and I think for the Belle Fourche community as well," G&W Assistant Vice President of Industrial Development Zach Boehme said. "After the expansion is complete, this facility will hold 90 cars at any given time. Our railroad

offers five-day a week service so essentially you could rotate through 90 cars, five days a week. So you're looking at 450 cars a week that could be handled through this facility, which equates to upward of 1,500 truckloads. It will be largest transload facility on the system. It's a huge market for us."

Read Full Article at: RailwayAge.com

Leadership Belle Fourche 2021-2022 Kicks Off

Please help us in welcoming our class members for this year:

- Samantha Gill Asst. Program Coordinator Belle Fourche Rec Center
- Glenda Larson Accounts Payable Clerk City of Belle Fourche
- Brady Harr PT DPT Pain and Movement
- Levi Buck Utility Construction Planner Black Hills Energy
- Brent Hardy City Engineer City of Belle Fourche
- Patrick Olson Store Lead Grossenburg Implement Inc.

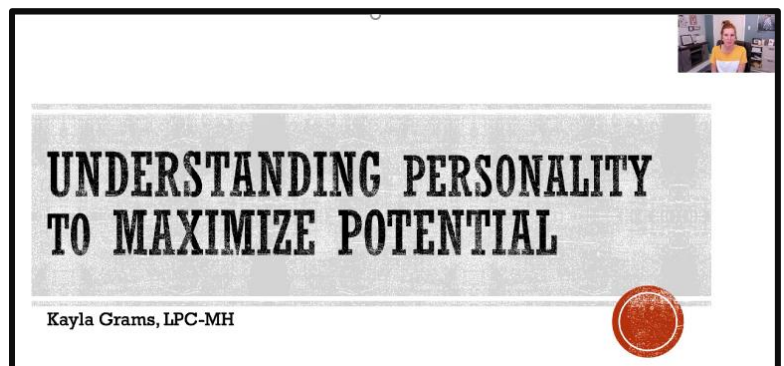
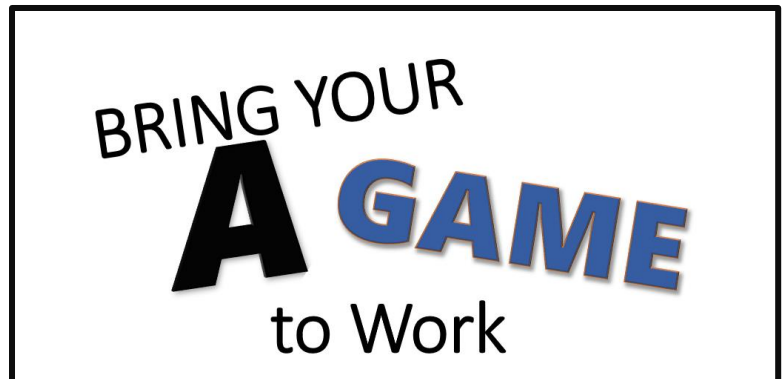
The September 16th class kicked off with three segments:

* Bring Your "A" Game To Work; presented by Zeann Gollither- Leadership Belle Fourche & Belle Fourche Economic Development Marketing Coordinator

* Personality Assessments & Leadership; presented by Kayla Grams - LPC-MH Belle Fourche Counseling

* Soil Conservation and Land & Ag Management; presented by Tanse Hermann - State Grazinglands Soil Health Specialist - SD

Next Session is October 21st with Butte County Operations Tours.





SOUTH DAKOTA DEPT. OF LABOR & REGULATION

Trade Adjustment Assistance (TAA) includes programs authorized under the Trade Expansion Act of 1962 and was redefined under the Trade Act of 1974. The original idea for trade compensation dates to 1939.

TAA is a federal entitlement program that assists U.S. workers who have lost or may lose their jobs as a result of direct or indirect relation to foreign trade. This program seeks to provide trade-affected workers with opportunities to obtain the skills, credentials, resources, and support necessary to become reemployed.

PROGRAM ELIGIBILITY: A petition identifies a worker group at a specific firm or subdivision and covers all individuals in that group. Generally, if a worker is laid off, a petition must be submitted within one year of the layoff for that worker to be covered by the petition and the certification if DOL grants the petition.

BENEFITS AND SERVICES: If a worker is a member of a worker group certified by DOL, that worker may be eligible to receive benefits and services at a Department of Labor Job Service office.

Is your Business's layoff TAA eligible? Ask yourself the following questions:

Increased Imports

Did the increase in imports contribute to worker separation or the threat of separation?

Did the increase contribute to the decline in the sales or production of articles of my Business?

Shifts to a Foreign Country:

Has my Business either shifted articles or the supply of services to a foreign country and did the shift contribute to our employees' separation or threat of separation?

Acquisition from a Foreign Country:

Has my Business acquired articles or services from a foreign country that are like or directly competitive with articles we produce?

Has the acquisition of articles or services contributed to my employees' separation or threat of separation?

Secondary Component Supplier or Downstream Producer:

Is my Business a supplier or a downstream producer to a firm that employed a group of workers who received a TAA certification of eligibility, and my supply or production is related to the article or service that was the basis for each certification?

If you answered YES to at least ONE of these questions, your Business might be eligible for a TAA petition. If you're not sure, reach out to DLR and we can assist you.

For more information about South Dakota's TAA program, contact a TAA employment specialist at a [Job Service office](#).